



The Messenger

Ascension Lutheran Church

Vol. 41, No. 3

March 2020

MINISTERS

"As a progressive and open church, we boldly make Christ's vision known."

STAFF

Julie Bailey, Pastor
Bob Aldrich, Education Coordinator
Jennifer Salowitz, Musician
Sara Gregor, Parish Nurse
Cheryl Huebner, Secretary
Dawn Dalton, Custodian
Ruth Schomaker, Custodian
Nicki Crump, Nursery Attendant

EXECUTIVE BOARD

Gus Hendrickson, President
Kris Friend, Vice President
Charleen Boland, Treasurer
Dawn Earnesty, Secretary

TABLE OF CONTENTS

Pastor's Message	1
Other	2-4
Worship	5
Youth	5-6
Member News	7
Health Highlights	7-8
Outreach	9
President's Message	9
Serving This Month	10
Calendar	11

WORSHIP SCHEDULE

Sundays 8:00am & 10:30am
Wednesdays 7:00pm

Phone (989) 781-2170
ascensionlc@sbcglobal.net

Website - www.ascensionlc.org

A MESSAGE FROM PASTOR JULIE

What does it mean to be Church?

This is a significant question to ask ourselves as we continue moving forward in mission. I would anticipate that if I asked individuals, there would be numerous and varied answers.



For some it is a place we go to worship, it is a place where we get needs met, a place that sifts out right from wrong.

We know that the church is not a building. Church is the people. But we are special people—we are Jesus people. Everything we do flows from our faith and commitment to Jesus. We believe in Jesus Christ...

Scripture says that the church is the "bride of Christ." The church is in relationship with Jesus, as we follow and obey, and love. We are a people loved by God and love God in return, along with loving all of God's creation. It is in this relationship that we love as Jesus loves. One of the ways we do this as a people is coming together to worship and praise God, to love and commit ourselves in love to a community based in the love of Jesus Christ.

Paul refers to the church as the "body of Christ." We are Christ in the world. It is through us that Christ's presence continues in our world today, that Christ's mission is carried out. As Christ, we seek those on the fringes, those on the margins who need to hear and be served with the saving grace of God in Jesus. These people are inside and outside our Ascension community—we need a foot in and a foot out.

As Jesus people, as Church, we share a mission. Jesus points this mission out to us in scripture—to be disciples; baptize; make disciples of all nations; go out into the world; to love and care for people as Jesus does; to carry our cross; to commit everything we have to life with Jesus; and on and on.

As we engage in the annual time of the church year set aside for reflection, I ask that you also reflect on how you are church, how do we foster the relationship with God, with each other, and with the world? Does what we do and say flow from the lips of Jesus people? What might these reflections mean for our life together moving forward?

OTHER

SEWING GROUP

Ascension's Sewing Group will meet in the Fellowship Hall on Wednesday, March 4th and Wednesday, March 18th from 9:00 a.m. - 12:00 p.m. Bring your sewing machine, and join us for fun and fellowship. We will be working on an easy community service project. Contact Sandy Graham at 781-1619 with any questions.

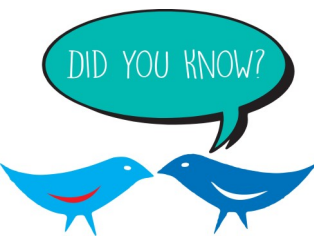


WEARING OF THE GREEN FELLOWSHIP

Join us on Monday, March 9th at 5:30 p.m. at Gabby's for Ascension's Wearing of the Green Fellowship. We will not have a costume contest this year, but let's still join in the celebration together and get our green on. The traditional Irish corned beef dinner will be available along with all of Gabby's favorites. Invite your friends!! The sign-up sheet is posted on the Kiosk in the Gathering Area.

SCRIP ORDERS

If you are planning on purchasing any gift cards, please consider purchasing them through our SCRIP program. Each time you order, a percentage of what you purchase is deposited into an account at Ascension and it doesn't cost you any more than face value. Order forms are available in the Gathering Area and on our website. Orders for this month must be submitted by Sunday, March 15th. Please contact Pastor Julie with questions.

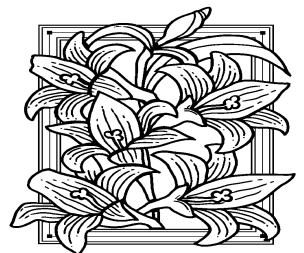


BERTHA H. WILSON FAMILY TRUST FUND

The Saginaw County Evangelical Lutheran Churches in America (ELCA), working in cooperation with the N/W Lower Michigan Synod of the ELCA, administer the Bertha H. Wilson Family Trust Fund. It supports ministries of the ELCA congregations in Saginaw County. ***The grant application must be submitted to the Church Council for approval before submission. The Church Council will meet on Tuesday, March 17th and will review the applications. Once approved, applications need to be submitted as soon as possible. Application deadline is Tuesday, March 31st.*** This is one of the rare opportunities for Ascension to acquire funding for those special projects that are in the minds/plans of the congregation. Let your imagination run wild, and let's apply for a grant(s). Please keep in mind, projects which will benefit the community and serve as a source of outreach have a higher probability of being approved. Forms are available in the Church Office.

EASTER FLOWERS

If you would like to purchase a plant to decorate our Chancel on Easter Sunday, fill out an envelope (located on the Kiosk) complete with your name and flower choice. Please place your payment in the basket in the Church Office. All plants are \$10, and include Easter Lilies, Daffodils and Tulips. Payment must be made before orders are placed. Please make your checks payable to Ascension Altar Guild. ***Order deadline is Sunday, March 22nd.***



OTHER



ASCENSION LUTHERAN CHURCH ENDOWMENT FUND

The Endowment Fund Committee is accepting applications for 2020 to fund projects which may support any of the following activities:

- Christian Education
- Mission Opportunities
- Evangelism
- Special Capital Improvement Opportunities
- Youth Programs
- Scholarships
- Technology
- Music Ministry
- Family Outreach

Because of the limited amount of money the Endowment Fund Committee makes on its investments each year, the committee reviews each application and awards monies on how the request fits the mission and purpose of the church. The maximum amount that can be funded for any activity is \$1,000. ***The application forms are available in the Church Office and must be submitted by March 31st.*** If there are any questions, please contact Andy Friend, Endowment Fund Committee Chairperson, at 798-6059. Special thanks to Bob Dillenbeck and Ruth Jakes for their service these past three years. Welcome to Melissa Albosta and Waylon Earnesty who have accepted a three-year appointment.

SCHOLARSHIPS

Attention all high school students and parents. There is a scholarship grant available for graduating seniors that are members of Ascension Lutheran Church. The scholarship packets, which include the guidelines and application form, are available in the Church Office. ***Application deadline is March 31st.*** If you have any questions, please contact the Church Office at 781-2170.

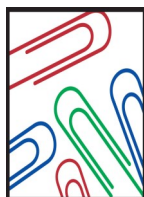


ARE WE HAVING A RUMMAGE SALE???

This is the question! Are we? At this time, no group has come forward stating they would like to host the Rummage Sale as a fund raiser for their ministry. There are some ministries that might want to consider this, but as of now it has not been claimed. If interested, please contact a member of council so that it can be approved.

TUESDAY MORNING BIBLE STUDY

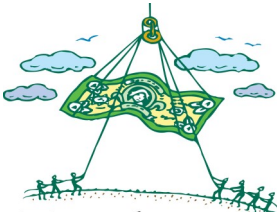
Our Tuesday morning group continues to read through the gospel of Mark. During the month of March, we will be reading some of the teachings and accounts of Passover and the time leading up to Jesus' death. All are welcome to join us. Just pop in!



Office Hours

The Church Office hours for March 30th, March 31st, April 1st and April 2nd are 9:00 a.m. until 12:00 p.m.

OTHER



Fundraiser

RAISE THE ROOF FUNDRAISER

Council made the decision to raise our goal for the Raise the Roof campaign, in anticipation of having the roof repaired this summer. The goal went to \$28,000 from \$20,000. It seems like a big jump. Right now we have raised approximately \$17,725.

The reason the goal was increased is because our bids are coming in higher than we had anticipated last year, even though we had built in a bit of a buffer. Our current bids range from \$25,350—\$28,000. This increase is in part because we had to repair some of the roof last year due to some leaks in the Library, and doing the job in two sections will increase cost. It is also due to a higher labor and material cost increase than we anticipated. Though we hope to keep things on the low side of cost, we can't anticipate what issues may be found.

We need to know we have the financial resources in order to schedule the work to be done; so if you haven't already donated, or you could give more, know that it would be appreciated. Anything we raise over the necessary amount will be used for our anticipated next major project, the parking lot.

Thank you to the Trustees and all who are anticipating and working hard on maintaining our building and giving glory to God.

*****We will receive a Noisy Offering designated to roof repair on Sunday, March 22nd and Wednesday, March 25th.**

ALTAR FLOWERS FOR MARCH

March 1st	Given in Celebration of her 60th Anniversary and her Birthday by Edna Bell
March 8th	<i>Flowers Needed</i>
March 15th	<i>Flowers Needed</i>
March 22nd	<i>Flowers Needed</i>
March 29th	<i>Flowers Needed</i>



Altar Flowers

The Flower Chart is posted in the Gathering Area on the Usher/Acolyte Room door. **The cost is \$30.00.** A payment envelope will be mailed to you. These arrangements are placed in the Sanctuary each week for worship and may be picked up after the late service on Sunday morning.

The MESSENGER is published monthly by
Ascension Lutheran Church.
Deadline for the April 2020 issue is
Monday, March 16th at 12:00 noon.
Please email articles to ascensionlc@sbcglobal.net.

WORSHIP



PERFECT LOVE CASTS OUT FEAR

Our Wednesday Lenten worship theme is “Perfect Love Casts Out Fear.” We will worship together with reflection, prayer, and communion centered around the following:

- March 4th: Love does no wrong to a neighbor.
- March 11th: Who will separate us from the love of Christ?
- March 18th: Love your enemies.
- March 25th: If you love me you will keep my commandments.
- April 1st: Perfect love casts out fear.

Please join us at 7:00 p.m. on Wednesdays for these special services.

PALM/PASSION SUNDAY WORSHIP

Please join us at 8:00 a.m. and 10:30 a.m. on Sunday, April 5th for our worship services as our reflection will be shared by drama. You don’t want to miss this dramatic interpretation of Jesus’ saving grace.



CALLING ALL THOSE WHO LOVE MUSIC

We need singers for Easter morning in the choir—adults and youth alike. We are also seeking handbell players—no experience required, youth and adults alike. Rehearsals are varied but will include weekday evenings as well as Sunday mornings to accommodate participant schedules. Would you like to join us on Sunday, April 12th as we present a choral anthem with handbells for Easter? Contact Jen Salowitz at jldowell2@yahoo.com or (810) 310-0493.

YOUTH

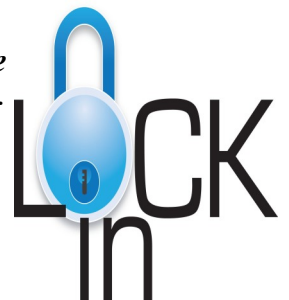
YOUTH LOCK-IN

Join us for a night of fun, games, fellowship and food. *Open to all youth 8th grade through 12th grade.* Invite a friend, bring a snack to share and your own beverages. Pizza dinner and breakfast will be provided.

When: March 20th and 21st

Time: 6:00 p.m. Friday through 10:00 a.m. Saturday

Please RSVP by Saturday, March 14th to Bob at trammlou@sbcglobal.net or 860-4356.



YOUTH

BLESSING OF HIGH SCHOOL AND COLLEGE GRADUATES

We will be blessing our high school and college graduates during the 10:30 a.m. worship service on Sunday, May 17th. If you would like to take part in this service, please email Bob at trammlou@sbcglobal.net. If participating, please provide Bob with a graduation picture, a baby picture and four to five other pictures of the years in between. The pictures are for a slide show that we will be presenting at the service. You can send the pictures to him electronically, or give them to him in church. If you have any questions, please contact Bob at 860-4356.



STONY LAKE SUMMER CAMP

Mark your calendars and get ready for a fun week of camp at Living Water Ministries Camp Stony Lake. We will be going to camp Sunday, June 21st through Friday, June 26th. This camp is open to elementary youth in grades 3-6, middle school youth entering 6th grade through 8th grades, and high school youth. If you are interested in attending one of the camps or have any questions, please contact Bob Aldrich at 860-4356 or trammlou@sbcglobal.net. Bob will provide you with the details you need to ensure you are registered with Ascension. For those attending Confirmation Camp for the first time...Ascension will pay for half of the cost of camp.

YES—YOUTH ENCOUNTER SERVICE

Take the Challenge! Put Your Faith in Action!!

This year our high school youth will partner with our catholic brothers and sisters in an amazing opportunity of service, fellowship and faith from June 21st—June 26th. Cost for the event is around \$140 which includes food, transportation, overnight accommodations, some work supplies and materials. We will be working in the Houghton Jones neighborhood again this year, and continue to make an impact on that community.



Teams will work together each day at a house in the city and within an outreach organization. Home repairs depend on the condition of the house and on what we can accomplish in one week. Such projects could include putting up drywall, painting, limited construction (fix a sagging floor or install new steps) and other general repairs. Plus, you will also be involved in direct outreach through various outreach organizations. Evening get-togethers will offer fun, learning, and new friends. Registration is due by May 1st and the forms will be available on our website as soon as possible. Space is limited and will be received first-come first-served. Join me as we make a difference! This is open to all students going into and already in high school. Don't miss this opportunity. Contact Pastor Julie with any questions.



COMING SOON—FIFTH ANNUAL RISE UP SOCCER CAMP 2020

Save the date: June 28th—July 1st. Watch the Gathering Area, Ascension Website and Facebook for more information. If you have any questions, contact Dawn Earnesty (Camp Director), Dave Dawson or Bob Aldrich.

MEMBER NEWS

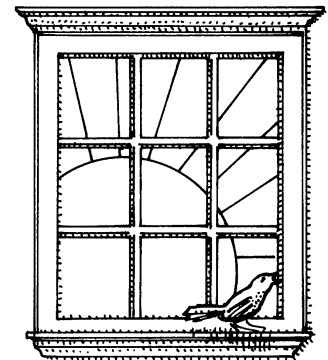
March Birthdays

1st	Edna Bell	18th	Cole Stadler
	Roger Koppenhofer	19th	Rebecca Enright
	Chris Trier		Gregory Wortley
	John Whelton	20th	Darren Dancer
2nd	Erika Collier		Jacob Faerber
3rd	Nikki Herren	21st	Ella Wardlow
	Steve Salowitz	23rd	Andy Friend
7th	Debra Beyerlein		Heidi Mackel
	Alayna Dalton		Brett Phillion
	Dana McClure	24th	Jacob Crook
	Joyce Richardson	27th	Robert Bolger
11th	Brooks Druelle		Lillian Hendrick
12th	Ella Frollo		Amy Kolb
15th	Diane Kolinski		Mitchell Turner
16th	Bob Mancini	29th	Tracy Aldrich

PLEASE REMEMBER THOSE ON ASCENSION'S CARE LIST

These are members who are unable to worship with us on a regular basis, who need to be remembered by their family at Ascension. Mail a card, plan a visit, or say a prayer for these members of our church family.

Ron Schultz - 10400 Swan Creek Rd., Saginaw, MI 48609
Frances Edie - 4850 Gratiot Rd., Apt. D2, Saginaw, MI 48638
Peggy Lockhart - 6143 Longmeadow Blvd. North, Saginaw, MI 48603
Gene Burchfield - 11826 Ridge View Drive, Rapid City, MI 49676
Helen Nothelfer - 302 Fulton Street, Room 108, St. Charles, MI 48655
Heidi Osterloh - 9345 Geddes Road, Saginaw, MI 48609
Marcy Schafer - 8049 Area Drive, Saginaw, MI 48609
Marv Yancer - 8936 N. Brookshire Drive, Saginaw, MI 48609
Delila Colpean - 302 Fulton Street, Room 103, St. Charles, MI 48655
Leslee Arnst - 2815 N. Orr Rd., Hemlock, MI 48626
Bev Daubert - Candlestone Assisted Living, 4124 Waldo, Midland MI 48642
Julia Attridge - 302 Fulton Street, Room 101, St. Charles, MI 48655



HEALTH HIGHLIGHTS



BLOOD PRESSURE SCREENING

Mark your calendar for blood pressure screenings by the Parish Health Committee. The next one will be held on Sunday, March 8th after each worship service.

HEALTH HIGHLIGHTS

Health Highlights by Kris Friend

ADOLESCENCE HEALTH: CRITICAL TIME TO DEVELOP A HEALTHY LIFESTYLE

Adolescence (ages 10-19) and young adulthood (ages 18-25) are generally healthy times of life and are extremely important times in health formation. The behavioral patterns established during these developmental periods help determine young people's current health status and their risk for developing chronic diseases during adulthood. Some important health and social problems that start or peak during this time include: mental disorders, substance use, smoking/nicotine use/vaping, nutrition and weight conditions, sexually transmitted diseases, motor vehicle accidents and violence toward self or others.



Adolescence is a critical transitional period that includes the biological changes of puberty and developmental tasks such as normative exploration and learning to be independent. Thus, experimentation and exploration, including using drugs and alcohol, sexual behavior, and other risk-taking activities often occur during this time. Adolescents often lack awareness of the harm associated with the risks they take and lack the skills to protect themselves. Because they are in developmental transition, adolescents and young adults are particularly sensitive to influences from their social environments. Their families, peer groups, schools, and neighborhoods can either support or threaten young people's health and well-being. The good news is the leading causes of illness and death among adolescents and young adults are largely preventable. Their health outcomes are influenced by behavior and linked to multiple social factors. Here is some empirical data to consider:

Family

- Adolescents who have good communication and are bonded with a caring adult are less likely to engage in risky behaviors.
- Parents who supervise and are involved with their adolescents' activities provide a safe environment for them to explore opportunities.
- Children of families living in poverty are more likely to have health conditions and poorer health status, as well as less access to and use of health care services.

School

- Student health and academic achievement are linked. Healthy students are more effective learners.
- Academic success and achievement strongly predict overall adult health outcomes. Proficient academic skills are associated with lower rates of risky behaviors and higher rates of healthy behaviors.
- High school graduation leads to lower rates of health problems, and risk for incarceration, as well as enhanced financial stability and socio-emotional well-being during adulthood.

Neighborhoods

- Those growing up in distressed neighborhoods, with high rates of poverty, are at risk for exposure to violence and a variety of negative outcomes, including poor physical and mental health, delinquency, and risky sexual behavior.

Social Media

- Although social media use offers important benefits such as health promotion, communication, education, and entertainment, it also increases risks for exposure to cyberbullying, engagement in "sexting," and depression.
- Adolescents exposed to media portrayals of violence, smoking, and drinking are at risk for adopting these behaviors.

But if any of you lack wisdom, you should pray to God, who will give it to you; because God gives generously and graciously to all. ~ James 1:5

References: Adolescent Health. Wikipedia; Healthy People.gov. Office of Disease Prevention and Health Promotion. Adolescent Health.

Health Highlights are brought to you by the Parish Health Committee whose members are Sara Gregor, Parish Nurse, Sharon Boyd, Dr. Steve Haupt, Marie Stuart, Joan Ford, Kris Friend and Traci Collier, DC.

OUTREACH



SAGINAW METRO MINISTRIES FOOD PANTRY (SMMFP) FUND DRIVE

Your contribution to Saginaw Metro Ministries Food Pantry during the FBEM (Food Bank of Eastern Michigan) MARCH TO FIGHT HUNGER campaign from March 1st—April 30th is a great way to maximize your gift. Once the program is over, FBEM will tally the money raised by SMMFP and the Food Bank will credit an additional 10% of that amount to our account. For example, if you raise \$1,000 the Food Bank will credit SMMFP an additional \$100 so you will have a total of \$1,100 for SMMFP! We are always looking for ways to raise money for our food pantry and this is a great opportunity. In today's economy, a 10% return on your investment is the best thing going! Checks must be made payable to the Food Bank of Eastern Michigan with "Matching Funds Program p-981" in the memo line, and be dated for March or April to be eligible for this program. All checks must be received at the Food Bank by April 30th and include a deposit slip. Deposit slips will be available soon on the Kiosk in the Gathering Area.

PRESIDENT'S MESSAGE

Dear Fellow Members in Christ,

Lent is upon us. Please join us for worship during the Easter Season!

Exciting things are happening with the Council during these first two months of 2020! We have been taking care of business, sharing how Ascension Lutheran Church (ALC) positively affects our lives and strategically planning how WE ALL can help ALC flourish moving forward into the future.



That being said, we invite each member to join the Council in a new initiative to participate in ALC's Strategic Planning. This is a way YOU can have a positive impact on how we can better serve our members as well as attract new families. Together, we will set goals and measure our progress on a regular basis in the areas of Spiritual Health, Congregational Care, Resource Management, Outreach and Member Retention and Growth.

It will be a rewarding experience that will impact ALC for years to come! The first opportunity will be Saturday, April 18th from 9:00 a.m. - 11:00 a.m. I plan on your attendance and will have a Continental Breakfast waiting for you! **FORWARD THINKING AND FELLOWSHIP April 18th at 9:00 a.m.!!!**

#NUMBERS6:24-26

In His Service,

Gus Hendrickson



***Daylight Savings Time begins on
Sunday, March 8th.***

Don't forget to set your clocks ahead on Saturday,
March 7th before you go to bed!

SERVING IN MARCH

Head Ushers--8:00 a.m./10:30 a.m.

- 1 Ken Schian/Andy Friend & Bob Beyerlein
- 8 Edna Bell/Dawn Dalton & Jeff Whelton
- 15 David Witker/Gus Hendrickson & Jim Stuart
- 22 Tim Wilson/Dave Dawson & Dave Huston
- 29 Ken Schian/Andy Friend & Bob Beyerlein

Readers--8:00 a.m./10:30 a.m.

- 1 Edna Bell/Steve Salowitz
- 8 Marty Debozy/Barb Van Marter
- 15 Charleen Boland/John Whelton
- 22 Tom Erskine/Lisa Whelton
- 29 Joan Ford/Chris Crump

Acolytes--8:00 a.m./10:30 a.m.

- 1 *No Acolyte*/Gabby Dalton & Harrison Salowitz
- 8 *No Acolyte*/Alexis Richardson
- 15 *No Acolyte*/Makena Whelton & Grey Hendrickson
- 22 *No Acolyte*/Henry Salowitz
- 29 *No Acolyte*/Brooke Richardson

Video Screen Operators--8:00 a.m./10:30 a.m.

- 1 Charleen Boland/Bob Aldrich
- 8 Kris Friend/Steve Salowitz
- 15 Charleen Boland/Bob Aldrich
- 22 Kris Friend/Will Salowitz
- 29 *Volunteer Needed*/Bob Aldrich

Prayers of the Church--8:00 a.m./10:30 a.m.

- 1 Pastor Julie/Chris Crump
- 8 Charleen Boland/Shelly Dawson
- 15 David Witker/Lisa Espinoza
- 22 Lynn Schomaker/Karen DeLaRosa
- 29 Ruth Schomaker/Chris Crump

Sound Board Operators--8:00 a.m./10:30 a.m.

- 1 Madison Morgan/Rusty Van Marter
- 8 Marty Debozy/Will Salowitz
- 15 Marty Debozy/Rusty Van Marter
- 22 Marty Debozy/Steve Salowitz
- 29 Marty Debozy/Rusty Van Marter

Hospitality/Security--8:00 a.m./10:30 a.m.

- 1 *Volunteer Needed*/Waylon Earnesty
- 8 *Volunteer Needed*/Kathy York
- 15 *Volunteer Needed*/Ron Fries
- 22 *Volunteer Needed*/Karen DeLaRosa
- 29 *Volunteer Needed*/*Volunteer Needed*

Friendly Callers

- 1 Bonnie Cavendish
- 8 David Witker
- 15 Sue Bailey
- 22 Bonnie Cavendish
- 29 David Witker

WEDNESDAYS

Head Ushers

- 4 Glen Mack
- 11 Mike Clifford
- 18 Bill Gottlieb
- 25 Glen Mack

Readers

- 4 John Schroeder
- 11 Mike Clifford
- 18 Joyce Richardson
- 25 Ben Salowitz

Sound Board/Video Screen

- 4 Rusty Van Marter/Ben Salowitz
- 11 John Schroeder/Connie Dutcher
- 18 Rusty Van Marter/Glen Mack
- 25 John Schroeder/Connie Dutcher

Prayers

- 4 Mike Clifford
- 11 Mike Clifford
- 18 Connie Dutcher
- 25 Connie Dutcher

*Thank you to everyone who participates in these important ministries.
If you are unable to serve on your assigned day,
please let the Church Office know who will be filling in for you.*