

# The MESSENGER

## What's INSIDE

- 1 Annual Meeting
- 2 Pastor's Message
- 2 Worship Schedule
- 3 Birthdays/Anniversaries
- 3 Bible Studies
- 4-5 Announcements
- 6 Youth News
- 7 Children's Activity
- 8 Serving This Month
- 9 Calendar

- Church office Hours are Monday thru Thursday 9am—2pm.
- The church office will be closed this winter if Swan Valley Schools are closed due to inclement weather.

## Our Website



MISSION: "As an open and progressive congregation, we boldly make Christ's vision known."

## Annual Meeting

The Congregational Annual Meeting will be held  
**Sunday, February 13th at 11:30 a.m.**  
(after the 10:30 a.m. worship service)



*All Confirmed Members of Ascension Lutheran Church are encouraged to attend as we review our 2021 year in ministry and attend to any official business*

The Annual Report is available for pickup at the church when you are present for worship service or during office hours.

You may also have the report emailed to you, contact Lisa at [ascensionlc@sbcglobal.net](mailto:ascensionlc@sbcglobal.net).



## Thank You

We are the church! It is clear that much of the work that happens in and through Ascension is by faithful disciples who utilize their Spirit gifts for the good of the whole. This month we celebrate two of those people who have given years of time and energy to the work of the Trustees.



Ron Fries has resigned from serving on the Trustee team after 15 years. He has been essential in the scheduling and organization of the committee, as well as an advocate for the Energy Star Award we have received these last years. Ron will continue to share his gifts in other ways, and is happy to share information he has gained throughout these years.

Mike Clifford has also taken leave from the Trustee team, however he will continue to serve on special projects and will trim the shrubs and bushes. He also has gifts in other areas that he will share for the good of all. Mike recently completed a term serving on the council as the Minister of Resource and Finance.

Thank you to Ron and Mike, and all those who work to make our congregation secure, safe, and efficient. And beautiful!

## **STAFF**

Julie Bailey, Pastor  
Jennifer Salowitz, Musician  
Lisa Whelton, Parish Administrator  
Dawn Dalton, Custodian  
Ruth Schomaker, Custodian

## **EXECUTIVE BOARD**

Gus Hendrickson, President  
Melissa Albosta, Vice President  
Connie Dutcher, Treasurer  
Susan Kelley, Secretary  
Kris Yackel-Friend, Financial Secretary

## **MINISTRIES**

Glen Mack, Congregational Care  
Tim Grueber, Finance/Resources  
Karen DeLaRosa, Outreach  
Celina Gottlieb, Spiritual Health  
Rita Hendrickson, Parish Nurse

## **WORSHIP SCHEDULE**

Sunday's: 8:00 a.m. & 10:30 a.m.  
Wednesday's 7:00 p.m.

## **CONTACT INFORMATION**

8695 Gratiot Road  
Saginaw, MI 48609  
Phone: (989) 781-2170

Pastoral Emergency: (989) 574-5663

**Email:** ascensionlc@sbcglobal.net

**Website:** www.ascensionlc.org

**Facebook:** www.facebook.com/  
groups/220876594969678  
(Group Name: Ascension Lutheran  
Church of Saginaw (ELCA) Group)

**YouTube:** Ascension Lutheran  
Church



*The Prayers and Sympathy of our  
congregation are extended to the family of  
Ron Schultz, who passed on January 19th.*

*A celebration of his life will take place in  
July.*

# **A Message From Pastor Julie**

Why join a church?

That is a question I get asked all the time. As someone who has been active in the church her whole life, my first response can be flippant—why not? I have lifelong friends from my confirmation class, my “home congregation” in Lincoln, and congregations where I have served hold a special place in my heart. But mostly I belong to a congregation in response to the reality that God loves me unconditionally and Jesus is here.

The church is made up of imperfect people, all of whom are loved unconditionally by our God. We are imperfect people who worship the perfect creator and Lord. Some people say the church is full of hypocrites, but I don't see it that way. None of us are claiming we have all the answers, or that we are perfect. We are imperfect people loved by a perfect God. Together we commit to follow God.

We are not only loved unconditionally, but God also has some expectations for us. Any relationship has expectations. What are the expectations in your marriage—those that are said and those that are unspoken? What about expectations between parent and child? Relationships bring with them a set of expectations and boundaries for the sake of a healthy relationship.

The church is not just a social organization, like a country club or other group where you pay your dues and then you are privy to certain rights and services. Being part of a church is a COMMITMENT to be part of God's community through the church, the body of Christ. When you commit to being part of a church, what we would call a member, there are expectations in that relationship as well, with God and with the other people who are part of that church. As a congregation, we are also connected to the larger group of believers throughout the church.

Some questions to consider:

What first drew you to Ascension?

What is your understanding of church and your role in the church?

Why is commitment important for church membership?



*Pastor Julie*

Pastor Julie Bailey

## **Wellness Warriors**

Join the Wellness Warriors on Tuesdays at 6:15 p.m. We are continuing to exercise (with masks).

Dress comfortably. Bring your water bottle and hand held weights if you have them.

Bring a friend; this is not limited to Ascension members only. Our goal is to move!

Questions? Contact Kris Friend 989-245-6446 or Rita Hendrickson 989-482-0271

Below is our schedule, class and description. We will help modify for anyone who needs it.

**\*Feb 1 - Grow Young** - chair/standing, arms & legs, balance activities

**\*Feb 8 - Walk away pounds-** walking in place, low impact step video; could adapt to chair

**\*Feb 15 - Shaped by Faith-** chair/ standing, arms & legs

**\*Feb 22 - Grow Young** - chair/standing, arms & legs, balance activities

*(The church is closed for inclement weather when Swan Valley Schools are closed.  
Check Facebook for updates or contact Kris.)*

## Bible Studies

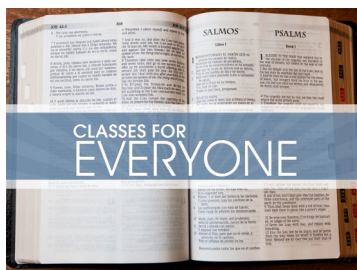
### Sunday Mornings—9:15 a.m.



Studying the book “Believe”, Living the story of the Bible to become like Jesus. Adults and youth not in our children’s Sunday School, are welcome. Each week in preparation for class you will be encouraged to read one chapter of the book. We will watch a brief video to prepare us for discussion. See Pastor Julie if you are interested.

### Tuesday Mornings—11:00 a.m.

This Bible Study meets via Zoom. 1 Corinthians is currently being studied and a new book will begin soon. All are welcome, even if you cannot attend every week. Contact Pastor Julie for the Zoom link.



## Women’s Bible Study

*Due to the rise in Covid exposures, this Bible Study was temporarily postponed until March.* Spiritual disciplines are essential to a more vibrant spiritual life and knowing God more intimately. Our next Bible Study written by Kelly Minter unpacks the Biblical foundation for these sacred habits along with approachable ways to practice disciplines like prayer, study, worship, rest, simplicity, generosity, celebration, and many more. Instead of being just one more thing on your to-do list, you’ll find that these habits of faith can actually create more margins to your life – providing peace and rest as you walk closer with Jesus.

Kelly is a Bible teacher, author, and singer/songwriter with a desire to serve women of all ages. She also partners with Justice & Mercy International, an organization that cares for the vulnerable and forgotten in the Amazon and Moldova.

Our Mary to Martha Women’s Bible Study is a seven week study that will begin on **Monday, March 14, 2022 at 6:30 p.m.** in the Digging Dunes room. Please let Joyce Richardson know if you are participating in the class so we may order enough books. Sign up by calling or texting Joyce at 989-274-6787. **All women are welcome!**



1st	Esther Mack
	Josh Whelton
2nd	Sheila Dambro
	Brad Phillion
4th	Nelson Staples
5th	Jeannie Hamilton
	Maliyah Johnson
10th	Todd Albrecht
	Pat Marceills
	David Maeder
11th	Holly Bostwick
12th	Chuck Latty
13th	Patrick Dalton
	Carol Schroeder
14th	Olivia Bostwick
16th	Jacob DeLaRosa
18th	Anni Mackel
20th	Aaron Gottlieb
	Harrison Salowitz
22nd	Zachary Maddox
	Scarlett Naples
24th	Roland Denman
25th	Max Dreyfus
	Paul Nielsen
26th	Dori Dalton
27th	Natalie Fleissner
	Ken Schian
	Layne Wakeman
28th	Chase Hamilton



5th	Bruce and Traci Collier
14th	Mike and Elaine Clifford
	Amy and Russell Kolb
15th	Ronald and Marie Leonard
	Rusty and Barb Van Marter
18th	John and Julie Stroebe
19th	John and Ginny Whelton
23rd	Don and Lorna Arndt
24th	Dick and Ruth Schomaker
25th	Todd and Alisha Albrecht
	Jim and Marie Stuart
26th	Marv and Barb Yancer
27th	Gilbert and Edna Bell



## Blood Pressure Screening

Mark your calendar for blood pressure screenings by the Parish Health Committee on the 3rd Sunday of every month. The next one will be held on **Sunday, February 20th.**





## Online Giving (VANCO)

It has been a while since we provided information on our direct online giving program. Ascension utilizes VANCO. Members can use VANCO to give on a regular schedule or for single donations. VANCO now offers a mobile app (Vanco Mobile Faith Engagement) from the App or Play store. Whether you login on your computer or through the app (or both), you will have 1 login. You can choose to give to either the General Fund or the Building Fund (Mortgage) or both.

To sign up today via your computer—go to our website ([ascensionlc.org](http://ascensionlc.org)), scroll to the bottom, click on “Online Tithing”, then click on “Sign Up” and follow the online directions.

To sign up via the Mobile App—download the app, when prompted add the invite code MRDSGS, Choose Ascension, click “Sign Up” and follow the directions.

If you already have a login, but haven’t logged in within 90 days, you may need to reset your password, click on “Log In”, type in your email address, click “Next”, then click on “Forgot password?” - this will take you through the steps to reset your password.

If you have any trouble with logging in or the giving, please contact Lisa at the office for assistance.

### Our YouTube Channel



## Offering Envelopes

2022 giving envelopes can be picked up at the church during Worship on Sundays and Wednesdays or during office hours; Monday-Thursday 9:00 a.m.-2:00 p.m. Please contact the office to make other arrangements, if needed.



## Thrivent Choice Dollars

### Thrivent Members—Direct your Thrivent Choice Dollars

If you are a partner with Thrivent (a fraternal organization that helps with financial management), you likely have what they call Thrivent Choice Dollars you can direct to help the ministry of Ascension and other worthwhile ministries. It doesn’t cost you any money, or affect any of your investments. If you don’t direct your money, nothing happens to it. Please consider directing your choice dollars. If you need help signing into your account don’t hesitate to ask for help. Pastor Julie or your Thrivent representative would be happy to help you. The deadline to direct your Choice dollars is **March 31, 2022**.

## Endowment Fund

The Ascension Lutheran Church Endowment Fund Committee is accepting applications for 2022 to fund projects which may support any of the following activities:

**Christian Education**  
**Music Ministry**  
**Scholarships**  
**Evangelism**  
**Special Capital Improvement Opportunities**

**Youth Programs**  
**Mission Opportunities**  
**Family Outreach**  
**Technology**



Because of the limited amount of money the Endowment Fund Committee makes on its investments each year, the committee reviews each application and awards monies on how the request fits the mission and purpose of the church. The maximum amount that can be funded for any activity is \$1,000. The applications are available on our website and in the Church Office and must be submitted by **March 31, 2022**. If there are any questions, please contact a member of the Endowment Committee: Waylon Earnesty, Melissa Albosta, Dori Dalton, Sara Gregor, or Tracy Aldrich.

## Scholarship



Attention all high school students and parents. There is a scholarship grant available for graduating seniors that are members of Ascension Lutheran Church. The scholarship packets, which include the guidelines and application form, are available in the Church Office and on our website. Application deadline is **March 31, 2022**. If you have any questions, please contact the Church Office at 989-781-2170 or via email at [ascensionlc@sbcglobal.net](mailto:ascensionlc@sbcglobal.net).



## Please Remember Those on Ascension's Care List

Mail a card, plan a visit, or say a prayer for these members of our church family.

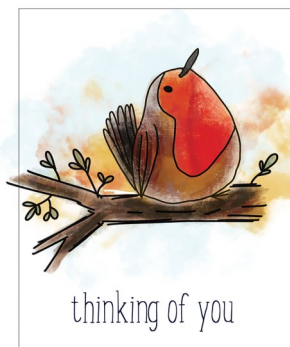
Leslee Arnst - 2815 N. Orr Rd.,  
Hemlock, MI 48626

John Kaul—5935 Shattuck Apt #13,  
Saginaw, MI 48603

Peggy Lockhart - 6143 Longmeadow Blvd.  
North, Saginaw, MI 48603

Jackie O'Dell—302 Fulton Street, Room  
108, St. Charles, MI 48655

Marv Yancer - 8936 N. Brookshire Drive,  
Saginaw, MI 48609



## Altar Flowers

If you would like to purchase flowers, please sign up on the flower chart **located on the Acolyte room**, call the office, or send an email to [ascensionlc@sbcglobal.net](mailto:ascensionlc@sbcglobal.net) to select a date. These arrangements are placed in the Sanctuary each week for worship and may be picked up after service on Sunday morning. You can choose a specific date and 2 arrangements are permitted each week. **The cost is \$30.00.** A payment envelope can be mailed to you, you can send a check to the office, or drop off payment when you are at church or during office hours (Monday-Thursday 9am-2pm).



February 6th      *Flowers Needed*

February 13th      For the anniversary of her baptism, by Pastor Julie Bailey

February 20th      In honor of their anniversary, Dick & Ruth Schomaker

February 27th      *Flowers Needed*

## Lawn Mowers



The Trustees are in need of 2 individuals who would like to assist with lawn mowing this year. We can pair individuals together or you can join as a 2-person team. Cutting takes place from April—October (weather permitting) and is done weekly. Each team cuts either 5 or 6 times during the season. The church has 2 riding lawnmowers and cutting takes approximately 2 hours. If you are interested in becoming part of the lawn mowing team or have any questions, please contact Tom Bailey, 989-239-3928.



### Our Facebook Page



## Pop Can Fundraiser

We are continuing to collect returnable pop cans and bottles. Our Youth are returning the cans for a fundraising activity. Half will go to the Youth returning the cans, half will go to the Youth general fund. You can drop your cans off in the vestibule near the Fellowship Hall, during office hours or when you are at the church. *(Please do not put them in the garage any longer as the youth cannot access them there)*

Thank you for your support!!

### 8th thru 12th Grade Youth Instructions:

1. Sign up on the kiosk to return cans
2. Grab the cans when you are at church that week
3. Return the cans at a local store
4. Put the cash in an envelope marked Youth Pop Cans with your name on it and give to Pastor Julie or leave in the church office\*



**\*Please provide the cash to the church no later than the next week**



Children's Church takes place weekly during the 10:30 a.m. worship service.

The youth, 4 years old through 5<sup>th</sup> grade, will begin worship with their families, and after the Children's Message, be dismissed with their teachers to experience the Word, or message of worship in a more age appropriate way. They will then return to worship as an entire congregation during the peace, so that our youth will still receive Communion or a blessing.

If you did not register in the fall, registration forms are available on our website or from the Children's Church Teachers in the classroom.

## 1st Year Confirmation Students

Confirmation Classes for 1st Year Students are generally the 2nd and 4th Sundays each month at **5:00 p.m.**

February 13th & 27th

March 6th

March 27th – No Class – Spring Break

April 10th & 24th

May 1st & 15th



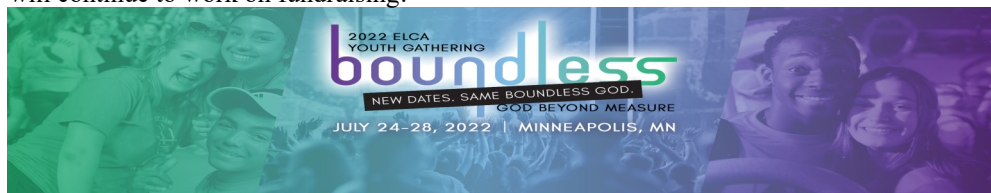
## 2nd Year Confirmation Students

Confirmation Classes for 2<sup>nd</sup> Year Students are weekly on Thursdays at **2:30 p.m.**

## 8th—12th Grade Youth

The next group meeting will be **February 20, 2022 at 5:30 p.m.** Your homework is to think of items we need to include in our covenant, consider any sites we wish to visit in Minneapolis as we have time.

Continue to collect cans/bottles and contemplate anything else we need to consider. We will continue to work on fundraising!



## Acolyte Training

Acolytes are generally elementary age through 6th grade and can participate once a parent feels they are responsible to carry the flame into and out of the service. They also assist with offering, communion, baptisms, and extinguish the candles. A specific service can be selected and participation ranges from monthly to bi-monthly depending on the number of Acolytes. One or two acolytes are needed at each service. This is one of the first ministries that our youth participate in and is essential in engaging them in volunteering in the future.

We are looking at either Sunday, February 20<sup>th</sup> or 27<sup>th</sup> after the 10:30 a.m. worship service for the training (Watch the announcements for confirmation of final date).

Joscelyn Whelton will be training new Acolytes. It can likely be completed in about 30-40 mins. The kids will practice acolyting as part of the training and will be paired up with an experienced acolyte during their first time (and 2nd time, if you think it would be helpful or they are still unsure). Once they are confident that they can Acolyte on their own, they can also Acolyte at the 8am service or 7pm on Wednesdays (if they or you desire).

They will learn:

- about the Acolyte Room (the robes & ties, signing in, the candle lighter)
- when to enter service to light the candles
- the order the candles are lit
- when to snuff the candles
- the order the candles are snuffed & carrying the light out of service
- how to assist during the service (offering and communion)

A parent or an adult needs to stay for the training.

Please let Lisa in the office know if you have a student interested in becoming an Acolyte.







### ?? ? Bible Quiz ? ?

In the book of Revelation, who or what is "prepared as a bride, adorned for her husband"?

- A. The church
- B. The Spirit
- C. Mary Magdalene
- D. The new Jerusalem

**Pull Out Your Bibles and Go To:**

**Revelation 21:2**  
For This Quiz

## Make a Valentine for Someone Special

You will need:

- ♥ a sheet of red construction paper
- ♥ a sheet of white copier paper
- ♥ glue or a glue stick
- ♥ scissors
- ♥ pencil
- ♥ red marker
- ♥ fine-point black marker

Rub a pencil over the boxes.



How to make it:

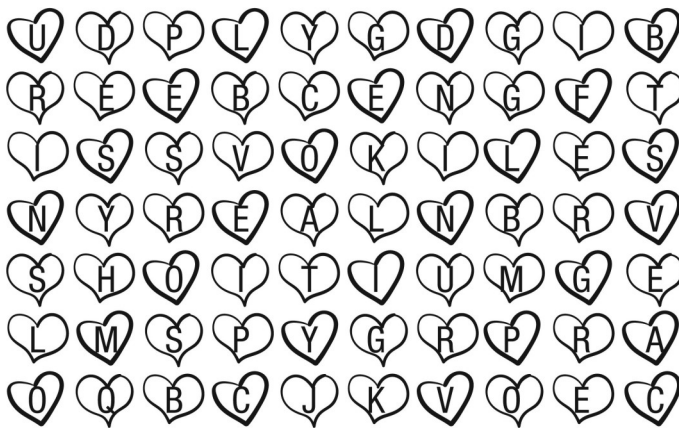
1. Cut a large heart out of the red paper.
2. Using the leftover scraps, cut out letters (about 1 inch high) to spell "I LOVE YOU" or "GOD LOVES YOU." Glue the letters in the center of the heart.
3. Cut a heart out of the white paper. Make it about 1 inch smaller than the red one.
4. Glue the white heart on top of the red one so that a 1 inch red border shows and the letters are covered.
5. Feel where the red letters are under the white paper and draw a box around each word using the red marker. Below the last box write: Rub a pencil over the boxes to find a special message!
6. Sign your name.



## The heart of a friend

Big-hearted friendliness comes from generously serving others.

*Directions: Start with the first D and move according to the arrows beneath the blanks. Then fill in the letters to complete 1 Peter 4:8-10.*



Above all, love each other D ↓ → ↑ → →, because love  
↓ ↓ ← ↓ ↓ ↑ over a multitude of ← ← ↓ ↓. Offer  
→ → ↓ → ↑ → ← ↓ to one another without  
→ → ↑ → ↑ ← → ↓. Each of you should use whatever  
→ → ↑ → ↑ ← → ↓ you have received to ↓ ← ↓ → ↓ others, as faithful  
↑ ↓ ↓ ↓ ↓ ↓ stewards of God's ← ↓ ↓ ↓ in its various forms.

1 PETER 4:8-10, NIV



# Serving in February

Readers	8am	10:30am
6	Kris Friend	Linda Lentner
13	Patty Hamilton	Linda Luplow
20	Susan Kelley	Joyce Richardson
27	Dick Schomaker	Dawn Dalton

Prayers	8am	10:30am
6	Charleen Boland	Tim Grueber
13	Ruth Schomaker	Karen DeLaRosa
20	Lynn Schomaker	Lisa Whelton
27	Susan Kelley	Dawn Dalton

## Sound Board Operators

6	<i>Volunteer Needed</i>	Steve Salowitz
13	<i>Volunteer Needed</i>	Will Salowitz
20	Madison Morgan	Ben Salowitz
27	<i>Volunteer Needed</i>	Henry Salowitz

## Video Screen Operators

6	Charleen Boland	Tim Grueber
13	Kris Friend	Tim Grueber
20	Mackenzie Morgan	Henry Salowitz
27	Charleen Boland	Tim Grueber

## Head Ushers

6	Schomaker	Dalton/Whelton
13	Roth	Hendrickson/Earnesty
20	Wilson	Dawson
27	Kelley	Friend/Beyerlein

## Acolyte

6	Gabby Dalton
13	Ethan Earnesty
20	Greyston Hendrickson
27	Ella Frollo



## Altar Guild

6	Kris Friend
13	Sue Bailey
20	Donna Fries
27	Susan Kelley

## February Librarian

Tracy Aldrich



## Children's Church

6	Madison & Mackenzie Morgan
13	Dawn Earnesty & Stephanie Wizner
20	Rita Hendrickson
27	Joscelyn Whelton & Louise Roby

## WEDNESDAYS

	Head Usher	Readers	Sound Board	Video Screen	Prayers
2	Glen Mack	Connie Dutcher	Henry Salowitz	Connie Dutcher	Connie Dutcher
9	Glen Mack	Joyce Richardson	Henry Salowitz	Connie Dutcher	Donna Malburg
16	Mike Clifford	Mike Clifford	Henry Salowitz	Glen Mack	Mike Clifford
23	Mike Clifford	Connie Dutcher	Henry Salowitz	Glen Mack	Connie Dutcher
2	Glen Mack	Joyce Richardson	Henry Salowitz	Connie Dutcher	Donna Malburg

*Thank you to everyone who participates in these important ministries. If you are unable to serve on your assigned day, please let the Church Office know who will be filling in for you.*



# Ascension Lutheran Church - February 2022

8695 Gratiot Road, Saginaw, MI 48609

(989) 781-2170

Email: [ascensionlc@sbcglobal.net](mailto:ascensionlc@sbcglobal.net)





Website: [ascensionlc.org](http://ascensionlc.org)

**Church Office hours:**

***Mondays—Thursdays from 9:00 a.m. - 2:00 p.m.***

**If you plan to meet for one of our Ministries in the church, please let the church office know.**



Sun	Mon	Tue	Wed	Thu	Fri	Sat
<div><div>AMORE</div><div>YOU &amp; ME</div><div>ONE I LOVE</div><div>IT'S LOVE</div><div>LOVE YOU</div><div>TRUE LOVE</div><div>SURE LOVE</div><div>DEAR ONE</div><div>HUGS</div><div>ONLY YOU</div><div>BE MINE</div></div>		<div>1</div> <div>11am-Bible Study-Zoom</div> <div>6:15pm-Wellness Warriors</div>	<div>2 <b>Groundhog Day</b></div> <div>9am-Sewing Group-FH</div> <div>11am-Weekend School Bags</div> <div>7pm-Worship/Communion</div> <div></div>	<div>3</div> <div>2:30pm-Confirmation2</div>	<div>4</div> <div><b>Office Closed</b></div>	<div>5</div> <div>FH Rental</div>
<div>6</div> <div>8am-Worship/Communion</div> <div>9:15am-Adult SS/Bible Study</div> <div>10:30am-Worship/Communion/Children's Church</div>	<div>7</div> <div>12pm-Staff Meeting</div>	<div>8</div> <div>11am-Bible Study-Zoom</div> <div>6:15pm-Wellness Warriors</div>	<div>9</div> <div>11am-Weekend School Bags</div> <div>12pm-Council Reports Due</div> <div>7pm-Worship/Communion</div>	<div>10</div> <div>2:30pm-Confirmation2</div>	<div>11</div> <div><b>Office Closed</b></div>	<div>12</div> <div>FH Rental</div>
<div>13</div> <div>8am-Worship/Communion</div> <div>9:15am-Adult SS/Bible Study</div> <div>10:30am-Worship/Communion/Children's Church</div> <div>11:30am-Annual Meeting</div> <div>5pm-Confirmation-1st yr</div>	<div>14 <b>Valentine's Day</b></div> <div>12pm-Staff Meeting</div> <div>12pm-Messenger Articles Due</div> <div></div>	<div>15</div> <div>11am-Bible Study-Zoom</div> <div>6:15pm-Wellness Warriors</div> <div>6:30pm-Council Mtg</div>	<div>16</div> <div>9am-Sewing Group-FH</div> <div>11am-Weekend School Bags</div> <div>7pm-Worship/Communion</div>	<div>17</div> <div>2:30pm-Confirmation2</div>	<div>18</div> <div><b>Office Closed</b></div>	<div>19</div>
<div>20 <b>Scrip Orders Due</b></div> <div><b>BP Screening</b></div> <div>8am-Worship/Communion</div> <div>9:15am-Adult SS/Bible Study</div> <div>10:30am-Worship/Communion/Children's Church</div> <div>5:30pm-Youth Mtg</div>	<div>21 <b>President's Day</b></div> <div>12pm-Staff Meeting</div> <div></div>	<div>22</div> <div>11am-Bible Study-Zoom</div> <div>6:15pm-Wellness Warriors</div>	<div>23</div> <div>11am-Weekend School Bags</div> <div>7pm-Worship/Communion</div> <div>Messenger Mailed</div>	<div>24</div> <div>2:30pm-Confirmation2</div>	<div>25</div> <div><b>Office Closed</b></div>	<div>26</div>
<div>27</div> <div>8am-Worship/Communion</div> <div>9:15am-Adult SS/Bible Study</div> <div>10:30am-Worship/Communion/Children's Church</div> <div>5pm-Confirmation-1st yr</div>	<div>28</div> <div>12pm-Staff Meeting</div> <div></div>					

**Prayer Chain requests should be called to Barb Van Marter at 989-781-7803**

## Ascension Lutheran Church

8695 Gratiot Road  
Saginaw, MI 48609  
Phone: (989) 781-2170  
www.ascensionlc.org

“ADDRESS SERVICE REQUESTED”

NON-PROFIT  
ORG.  
U.S. POSTAGE  
PAID  
SAGINAW, MI  
PERMIT NO. 59



volume 43 • number 2

# The MESSENGER

Don't Miss the

**DEADLINE!**

*The MESSENGER* is published monthly by Ascension Lutheran Church.

Deadline for the March 2022 issue is  
**Monday, February 14th at 12:00 (noon).**

Articles may be emailed to [ascensionlc@sbcglobal.net](mailto:ascensionlc@sbcglobal.net)

